

Advanced Level Course

# AUTODESK® REVIT FAMILIES

## CREATING CONTENT

Families are an integral part of working in Revit Architecture, and key to creating custom content. Revit Families is vital for companies working in with Building Information Model (BIM), which are looking for maximize productivity. The course design for intermediate and advanced users who would like a better understanding of family creation and share parameters. Families are a key component in the BIM processes, the abilities develop in this course will allow the user to re-use existing contents which will help to accelerate process.

## Course Overview

The course is presented by our team of specialist that will show the theory behind the tools, but also practice classroom exercises which will help you to understand and furthermore put in practice the new acquire tools in your projects. The trainees will learn how to create and edit families, apply constrains, shared parameters and understand nest families. *This course is applicable for the **Arcdox Revit expertise program**. Contact us for more info.*

## Recommended experience level

For professionals with previous experience in Revit, or just focus in create content.

## Modality

2 Days course (12 hours), delivered in our training facilities in Sandyford, or can be delivered on site.

## Material

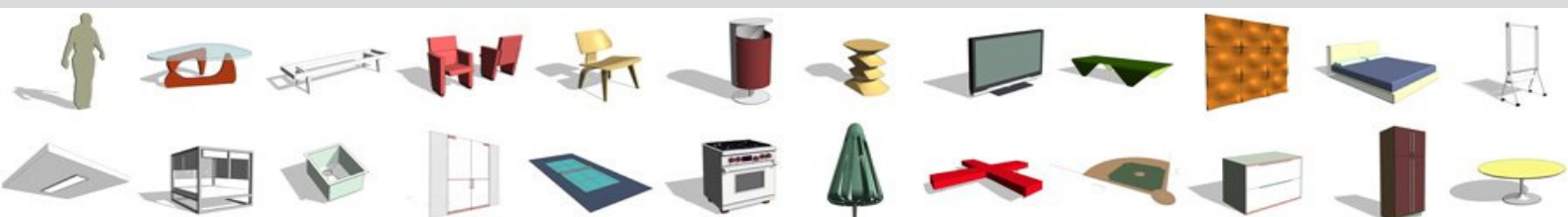
Training Book and Revit files are provided by us.

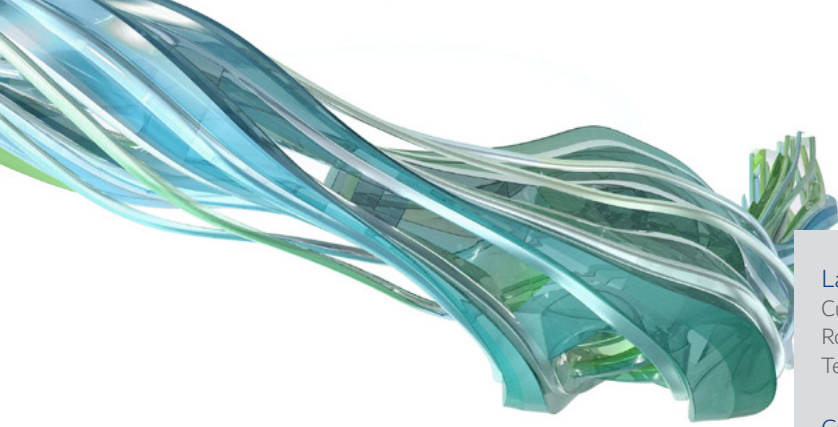
## Certificate

After this course you will have the skills to create Revit content, in addition as Autodesk® Authorized Training Centre (ATC®) you will receive an official certificate from Autodesk at the end of the course. This course was designed to meet your learning needs with professional instructors, relevant content, authorized courseware, and evaluation by Autodesk.



Powered by:





# Revit Families Modules

## Labels and Annotation Families

- Customise dimensions
- Room labels
- Text Families

## Custom System Families

- Create Wall, Roof, Floor, and Ceiling types
- Vertically compound Walls
- Stacked and Embedded Walls
- Creating MEP system families

## Component Family Concepts

- Creating component families
  - Preparing to create families
  - Saving custom families
- Creating the parametric framework
  - Adding dimensions and labels
  - Flexing geometry
  - Creating and modifying parameters
- Creating family elements
  - Extrusions / Blends / Revolves / Sweeps / Swept blend
  - Alinging and locking
- Creating family types
  - Working with families in projects

## Advance Family Techniques

- Additional tools for families
  - Adding controls, Room calculation points, Connectors, openings...
- Visibility display settings
  - Adding lines, creating masking regions

## Additional Family Types

- Creating in-place families
- Creating profiles
- Creating symbol families
- Working with project and shared parameters

## Creating Architectural Specific Families

- Custom doors and windows
- Angled cornices and copings
- Custom railings

## Creating MEP Specific Families

- Upgrade an Architectural Plumbing fixture to MEP
- Create a data device with annotation Parameters
- Create a pipe fitting flange

## Creating Structural Specific Families

- Parametric gusset plate
- Built-up column
- Truss family

## Additional Management Tools

- General Settings
- Creating object styles
- Creating fill patterns
- Creating materials

## About Training in ArcDox

ArcDox are unique in Ireland as the only working practise that is also an AutoDesk Authorised Training Centre. Our AutoDesk Certified Trainers, are also professionally qualified users, working with BIM on a daily basis.

We can provide a range of training options, whether at our dedicated training facilities in Dublin, or On-Site training at your company or for your project teams. We are also developing a range of Online, and Blended Training courses which are underpinned by ArcDox's expertise and support services.



## ARCDOX

Architecture & Training Centre

Unit 309 Q-House  
76 Furze Road, Sandyford  
Dublin D18 YV50  
Ireland.

mail@arcdox.com

Tel: +353 (0)1 4371200  
Fax: +353 (0)1 4371201